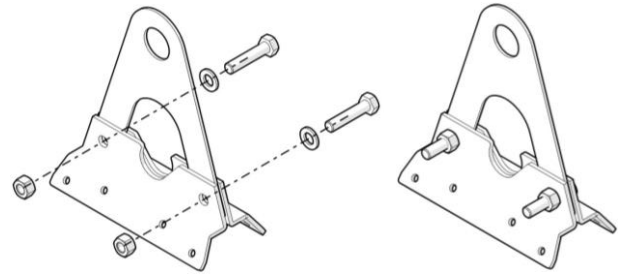
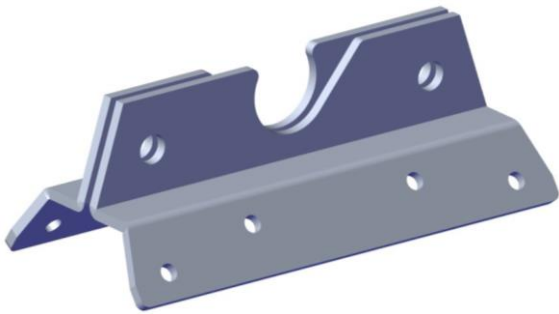


Trapezoidal Snow Retention Bracket

TECHNICAL DATA



Key Features

The snow-retention bracket for trapezoidal roofing is fastened to the roof using trapezoidal roofing screws.

Fasteners: M5.5×38 mm galvanized steel screw shall be used. M10×35 stainless steel bolt; grade 7.0 A2.

Aluminum material: EN AW-5754; in accordance with ÖNORM EN 485-2 or ÖNORM EN 1396.

The trapezoidal snow-retention bracket body consists of two opposed clamp halves.

Coating: Optional (if required, defined per EN 12206-1).

Specifications

Parameter	Value	Note
Use	—	Installation is performed by through-fastening (penetrating the roof). Bolt-tightened opposed clamp halves
Material	EN AW-5754	ÖNORM EN 485-2 or ÖNORM EN 1396
Fasteners	M5.5×38 mm galvanized steel screw; M10×35 mm stainless-steel bolt; grade 7.0 A2	—
Coating	Optional	EN 12206-1 (if applicable)



Trapezoidal Snow Retention Bracket

Compliance
