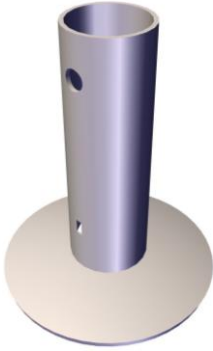


Post Socket

TECHNICAL DATA



Key Features

Manufactured from S235 structural steel (TS EN 10025-2); tube with circular base plate.

Tube dimensions: $\text{Ø}48 \times 2.5$ mm (outer diameter \times wall thickness).

Total weight: 0.961 kg (tube: 0.413 kg + circular base).

System connection via FBS II 8 \times 100 (M8 \times 100) concrete screw.

The post socket shall be electrogalvanized. A coating in accordance with EN 12811-2 may be specified.

Specifications

Parameter	Value	Note
Dimensions ($\text{Ø} \times t$)	48 \times 2.5 mm	—
Material	S235	TS EN 10025-2
Coating	Elektro galvanized	EN 12811-2 (if applicable)
Fasteners	FBS II 8 \times 100 (M8 \times 100) concrete screw	—
Weight	0.961 kg (total)	Tube: 0.413 kg

Compliance

EN 13374 Class A/B